



SPILLMAN ANALYTICS

NAVIGATE FULLY INTEGRATED, MAP-BASED ANALYTICS FOR INFORMED DECISION MAKING

MAP-BASED INTELLIGENCE AND ANALYTICS

The Spillman Analytics module offers agencies a map-based analytics tool to assist in Intelligence-Led Policing (ILP) initiatives, helping them make informed decisions about their resources. With multiple data layers and customizable time and date ranges, agencies can use many tools to analyze data, including crime-specific filters, heat maps, pin maps, time comparison analytics, and more. Spillman Analytics gives users the ability to create geographic profiles for quick access to specific areas for hotspot monitoring. Users can also create up to 20 customized dashboards to view and analyze data.

MULTIPLE REPORTING TOOLS

Reporting tools allow users to create, schedule, and disseminate reports through email. Personnel can choose from multiple reporting tools and analytic features to help analyze nearly every aspect of agency data. Agencies can utilize charts and graphs to visualize crime patterns and trends across jurisdictional lines.

TIGHT SYSTEM INTEGRATION

As the most sophisticated interface in the industry connecting LexisNexis data to RMS and CAD information, Spillman Analytics offers distinct advantages due to tight system integration. The module offers unique Link Back functionality that allows agencies to select a record on any analytics map and open the full record in their RMS or CAD system. Agencies can define which events or records get exported, as well as set their own preferences for export frequency, including completed CAD call data. Because Spillman Analytics offers true integration with LexisNexis

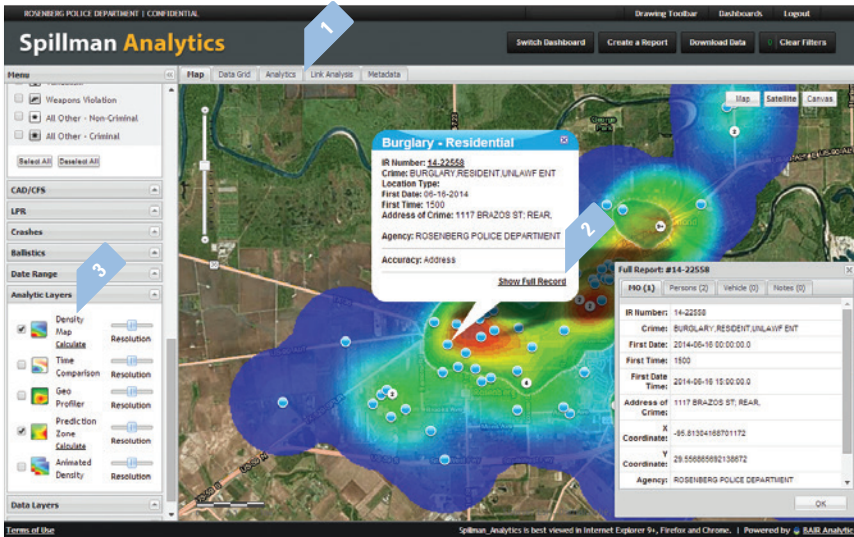
and works within an existing Spillman Flex system, personnel benefit from single sign-on and a single point of customer support. Crime and call for service data related to each incident is searchable and viewable throughout other Flex modules, including call, complainant, location, offense, suspect and victim descriptions, information on vehicles related to incidents, and responding officer information.

SYSTEM CUSTOMIZATION

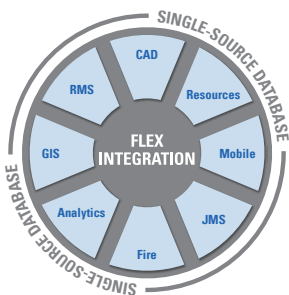
When setting up their system, agencies can choose to use FBI-standard location types or create agency-specific location types when setting field mapping preferences. Spillman Analytics customers can also add privacy codes to incidents to prevent certain information from sensitive cases from being exported. Agencies can also upload a badge image to customize reports.

CROSS-AGENCY AND MULTI-JURISDICTIONAL SHARING

With Spillman Analytics, agencies can view, analyze, and download crime and call data from any other agency using LexisNexis products. Each agency can determine whether or not they will share data with surrounding agencies, the public, or both. Agencies can also choose whether to share incident, CAD, or both data sets when exporting to LexisNexis.



1. Analysts can use five available analytic tools to identify crime patterns, including hot spots.
2. With Spillman Analytics, users can access and open full records due to complete integration with the Spillman Flex system.
3. Users can initiate queries on more than 126 incident and calls-for-service data elements on a jurisdictional map.



TOTAL SOFTWARE INTEGRATION

Spillman Flex's Integrated Hub™ is an open, centralized database where all agency information is entered, stored, and extracted in real time, providing total software integration. This allows users to enter data once and have it automatically shared among related modules. Agencies using this module can optimize their system and enhance productivity through total integration with other Flex modules.

